

GRK1 (YD33402) Rabbit mAb

货号: **AYD13164**

产品信息

反应	Human,Mouse,Rat
宿主	Rabbit
克隆性	Monoclonal
预测反应	
应用	WB
推荐浓度	
理论分子量	64kDa
实测分子量	
形式	Liquid
保存条件	Store at -20°C. Avoid freeze / thaw cycles. Buffer: PBS with 0.75% BSA,50% glycerol,pH7.3.
偶联物	Unconjugated
阳性对照	Y79
细胞定位	Membrane, Cell projection, cilium, photoreceptor outer segment
纯化	

抗原信息

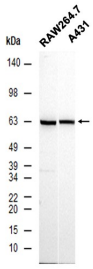
抗原信息	
------	--

靶点信息

研究背景	This gene encodes a member of the guanine nucleotide-binding protein (G protein)-coupled receptor kinase subfamily of the Ser/Thr protein kinase family. The protein phosphorylates rhodopsin and initiates its deactivation. Defects in GRK1 are known to cause Oguchi disease 2 (also known as stationary night blindness Oguchi type-2).
基因ID	6011
基因名	GRK1
Swiss	Q15835

别名	GRK1 (YD33402)
----	----------------

产品验证



实验步骤

访问官网浏览详情: www.ablybio.cn