

# Lumican (YD19074) Rabbit mAb

货号: **AYD13159**

## 产品信息

|       |   |
|-------|---|
| 反应    | Human,Mouse,Rat   |
| 宿主    | Rabbit  |
| 克隆性   | Monoclonal  |
| 预测反应  |   |
| 应用    | WB IHC-P ICC/IF FC  |
| 推荐浓度  |   |
| 理论分子量 | 38kDa   |
| 实测分子量 |   |
| 形式    | Liquid  |
| 保存条件  | Store at -20°C. Avoid freeze / thaw cycles.<br>Buffer: PBS with 0.75% BSA,50% glycerol,pH7.3. |
| 偶联物   | Unconjugated  |
| 阳性对照  | A-549,HepG2,Mouse heart,Mouse lung,Rat heart,Rat lung   |
| 细胞定位  | Secreted, extracellular space, extracellular matrix   |
| 纯化    |   |

## 抗原信息

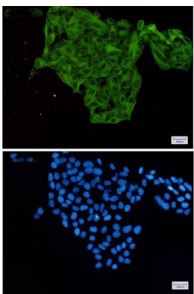
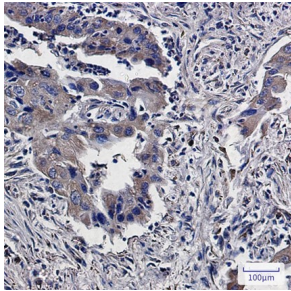
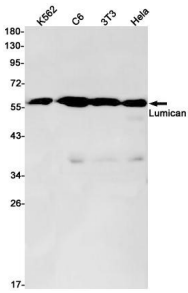
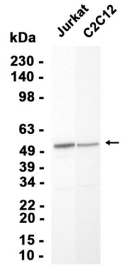
|      |  |
|------|--|
| 抗原信息 |  |
|------|--|

## 靶点信息

|      |   |
|------|---|
| 研究背景 | This gene encodes a member of the small leucine-rich proteoglycan (SLRP) family that includes decorin, biglycan, fibromodulin, keratan, epiphygan, and osteoglycin. In these bifunctional molecules, the protein moiety binds collagen fibrils and the highly charged hydrophilic glycosaminoglycans regulate interfibrillar spacings. Lumican is the major keratan sulfate proteoglycan of the cornea but is also distributed in interstitial collagenous matrices throughout the body. Lumican may regulate collagen fibril organization and circumferential growth, corneal transparency, and epithelial cell migration and tissue repair. |
| 基因ID | 4060  |
| 基因名  | LUM   |

|       |                   |
|-------|-------------------|
| Swiss | P51884            |
| 别名    | Lumican (YD19074) |

## 产品验证



## 实验步骤

访问官网浏览详情: [www.ablybio.cn](http://www.ablybio.cn)