

Sumo 1 (YD15136) Rabbit mAb

货号: **AYD13123**

产品信息

反应	Human,Mouse,Rat
宿主	Rabbit
克隆性	Monoclonal
预测反应	
应用	WB IHC-P
推荐浓度	
理论分子量	12kDa
实测分子量	
形式	Liquid
保存条件	Store at -20°C. Avoid freeze / thaw cycles. Buffer: PBS with 0.75% BSA,50% glycerol,pH7.3.
偶联物	Unconjugated
阳性对照	293T
细胞定位	Nucleus membrane, Nucleus speckle, Cytoplasm, Nucleus, PML body, Cell membrane
纯化	

抗原信息

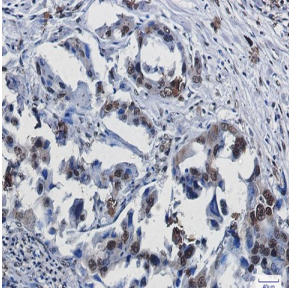
抗原信息	
------	--

靶点信息

研究背景	This gene encodes a protein that is a member of the SUMO (small ubiquitin-like modifier) protein family. It functions in a manner similar to ubiquitin in that it is bound to target proteins as part of a post-translational modification system. However, unlike ubiquitin which targets proteins for degradation, this protein is involved in a variety of cellular processes, such as nuclear transport, transcriptional regulation, apoptosis, and protein stability. It is not active until the last four amino acids of the carboxy-terminus have been cleaved off. Several pseudogenes have been reported for this gene. Alternate transcriptional splice variants encoding different isoforms have been characterized.
基因ID	7341
基因名	SUMO1

Swiss	P63165
别名	Sumo 1 (YD15136)

产品验证



实验步骤

访问官网浏览详情: www.ablybio.cn