

SAE1 (YD15100) Rabbit mAb

货号: **AYD13122**

产品信息

反应	Human,Mouse
宿主	Rabbit
克隆性	Monoclonal
预测反应	
应用	WB ICC/IF
推荐浓度	
理论分子量	38kDa
实测分子量	
形式	Liquid
保存条件	Store at -20°C. Avoid freeze / thaw cycles. Buffer: PBS with 0.75% BSA,50% glycerol,pH7.3.
偶联物	Unconjugated
阳性对照	293T,MCF7,DU145,Mouse testis,Mouse thymus,Rat testis
细胞定位	Nucleus
纯化	

抗原信息

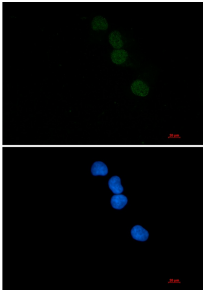
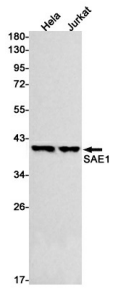
抗原信息	
------	--

靶点信息

研究背景	Posttranslational modification of proteins by the addition of the small protein SUMO (see SUMO1; MIM 601 912), or sumoylation, regulates protein structure and intracellular localization. SAE1 and UBA2 (MIM 6132 95) form a heterodimer that functions as a SUMO-activating enzyme for the sumoylation of proteins (Okuma et al., 1999 [PubMed 9920803]).[supplied by OMIM, Mar 2010]
基因ID	10055
基因名	SAE1
Swiss	Q9UBE0

别名	SAE1 (YD15100)
----	----------------

产品验证



实验步骤

访问官网浏览详情: www.ablybio.cn