

CLASP1 (YD15427) Rabbit mAb

货号: **AYD13076**

产品信息

反应	Human,Mouse,Rat
宿主	Rabbit
克隆性	Monoclonal
预测反应	
应用	WB IHC-P ICC/IF FC
推荐浓度	
理论分子量	169kDa
实测分子量	
形式	Liquid
保存条件	Store at -20°C. Avoid freeze / thaw cycles. Buffer: PBS with 0.75% BSA,50% glycerol,pH7.3.
偶联物	Unconjugated
阳性对照	HepG2,MCF7,Mouse brain,Rat brain
细胞定位	Cytoplasm, cytoskeleton, microtubule organizing center, centrosome, Chromosome, centromere, kinetochore, spindle, Golgi apparatus, trans-Golgi network
纯化	

抗原信息

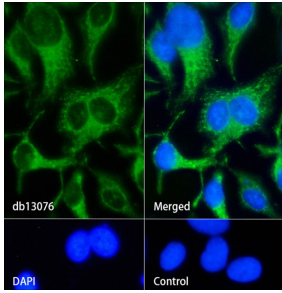
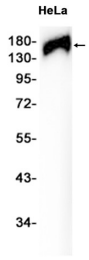
抗原信息	
------	--

靶点信息

研究背景	CLASPs, such as CLASP1, are nonmotor microtubule-associated proteins that interact with CLIPs (e.g., CLI P170; MIM 179838). CLASP1 is involved in the regulation of microtubule dynamics at the kinetochore and throughout the spindle (Maiato et al., 2003 [PubMed 12837247]).[supplied by OMIM, Mar 2008]
基因ID	23332
基因名	CLASP1
Swiss	Q7Z460

别名	CLASP1 (YD15427)
----	------------------

产品验证



实验步骤

访问官网浏览详情: www.ablybio.cn