

# Kinesin Heavy Chain 2 (YD33714) Rabbit mAb

货号: **AYD13067**

## 产品信息

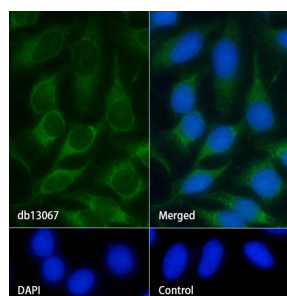
反应	Human
宿主	Rabbit
克隆性	Monoclonal
预测反应	
应用	WB IHC-P ICC/IF
推荐浓度	
理论分子量	80kDa
实测分子量	
形式	Liquid
保存条件	Store at -20°C. Avoid freeze / thaw cycles. Buffer: PBS with 0.75% BSA,50% glycerol,pH7.3.
偶联物	Unconjugated
阳性对照	293T,Jurkat,Mouse lung,Rat brain
细胞定位	Cytoplasm, cytoskeleton, microtubule organizing center, centrosome, spindle pole, spindle
纯化	

## 抗原信息

抗原信息	
------	--

## 靶点信息

研究背景	The protein encoded by this gene is a plus end-directed motor required for normal mitotic progression. The encoded protein is required for normal spindle activity during mitosis and is necessary for normal brain development. Several transcript variants encoding different isoforms have been found for this gene.
基因ID	3796
基因名	KIF2A
Swiss	O00139
别名	Kinesin Heavy Chain 2 (YD33714)



### 实验步骤

访问官网浏览详情: [www.ablybio.cn](http://www.ablybio.cn)