

PSF1 (YD18915) Rabbit mAb

货号: **AYD13053**

产品信息

反应	Human,Mouse,Rat
宿主	Rabbit
克隆性	Monoclonal
预测反应	
应用	WB ICC/IF FC
推荐浓度	
理论分子量	23kDa
实测分子量	
形式	Liquid
保存条件	Store at -20°C. Avoid freeze / thaw cycles. Buffer: PBS with 0.75% BSA,50% glycerol,pH7.3.
偶联物	Unconjugated
阳性对照	
细胞定位	Nucleus, Chromosome
纯化	

抗原信息

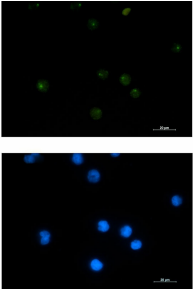
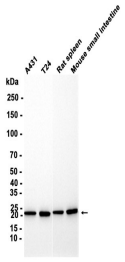
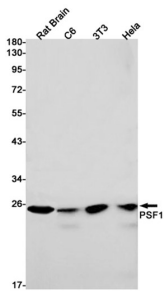
抗原信息	
------	--

靶点信息

研究背景	Required for correct functioning of the GINS complex, a complex that plays an essential role in the initiation of DNA replication, and progression of DNA replication forks (PubMed:17417653, PubMed:28414293). GINS complex is a core component of CDC45-MCM-GINS (CMG) helicase, the molecular machine that unwinds template DNA during replication, and around which the replisome is built (PubMed:32453425, PubMed:34694004, PubMed:34700328, PubMed:35585232)
基因ID	9837
基因名	GINS1
Swiss	Q14691

别名	PSF1 (YD18915)
----	----------------

产品验证



实验步骤

访问官网浏览详情: www.ablybio.cn