

# SPON2 (YD19384) Rabbit mAb

货号: **AYD13002**

## 产品信息

反应	Human,Mouse
宿主	Rabbit
克隆性	Monoclonal
预测反应	
应用	WB
推荐浓度	
理论分子量	36kDa
实测分子量	
形式	Liquid
保存条件	Store at -20°C. Avoid freeze / thaw cycles. Buffer: PBS with 0.75% BSA,50% glycerol,pH7.3.
偶联物	Unconjugated
阳性对照	HCT116,HeLa,Rat brain
细胞定位	Secreted, extracellular space, extracellular matrix
纯化	

## 抗原信息

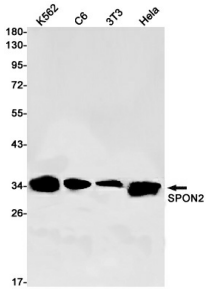
抗原信息	
------	--

## 靶点信息

研究背景	Cell adhesion protein that promotes adhesion and outgrowth of hippocampal embryonic neurons. Binds directly to bacteria and their components and functions as an opsonin for macrophage phagocytosis of bacteria. Essential in the initiation of the innate immune response and represents a unique pattern-recognition molecule in the ECM for microbial pathogens (By similarity). Binds bacterial lipopolysaccharide (LPS).
基因ID	10417
基因名	SPON2
Swiss	Q9BUD6

别名	SPON2 (YD19384)
----	-----------------

## 产品验证



## 实验步骤

访问官网浏览详情: [www.ablybio.cn](http://www.ablybio.cn)