

# Ube2L6 (YD34011) Rabbit mAb

货号: **AYD12999**

## 产品信息

反应	Human
宿主	Rabbit
克隆性	Monoclonal
预测反应	
应用	WB IHC-P
推荐浓度	
理论分子量	18kDa
实测分子量	
形式	Liquid
保存条件	Store at -20°C. Avoid freeze / thaw cycles. Buffer: PBS with 0.75% BSA,50% glycerol,pH7.3.
偶联物	Unconjugated
阳性对照	Mouse spleen
细胞定位	
纯化	

## 抗原信息

抗原信息	
------	--

## 靶点信息

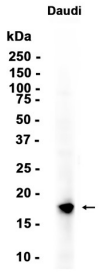
研究背景	The modification of proteins with ubiquitin is an important cellular mechanism for targeting abnormal or short-lived proteins for degradation. Ubiquitination involves at least three classes of enzymes: ubiquitin-activating enzymes (E1s), ubiquitin-conjugating enzymes (E2s) and ubiquitin-protein ligases (E3s). This gene encodes a member of the E2 ubiquitin-conjugating enzyme family. This enzyme is highly similar in primary structure to the enzyme encoded by the UBE2L3 gene. Two alternatively spliced transcript variants encoding distinct isoforms have been found for this gene.
基因ID	9246
基因名	UBE2L6
Swiss	O14933

---

别名	Ube2L6 (YD34011)
----	------------------

### 产品验证

---



### 实验步骤

访问官网浏览详情: [www.ablybio.cn](http://www.ablybio.cn)