

AP2B1 (YD34202) Rabbit mAb

货号: **AYD12957**

产品信息

反应	Human,Mouse,Rat
宿主	Rabbit
克隆性	Monoclonal
预测反应	
应用	WB
推荐浓度	
理论分子量	105kDa
实测分子量	
形式	Liquid
保存条件	Store at -20°C. Avoid freeze / thaw cycles. Buffer: PBS with 0.75% BSA,50% glycerol,pH7.3.
偶联物	Unconjugated
阳性对照	K-562,Mouse testis,Mouse brain,Mouse lung,Rat testis,Rat brain
细胞定位	Cell membrane, Membrane, coated pit
纯化	

抗原信息

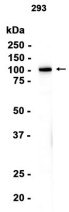
抗原信息	
------	--

靶点信息

研究背景	The protein encoded by this gene is one of two large chain components of the assembly protein complex 2, which serves to link clathrin to receptors in coated vesicles. The encoded protein is found on the cytoplasmic face of coated vesicles in the plasma membrane. Two transcript variants encoding different isoforms have been found for this gene.
基因ID	163
基因名	AP2B1
Swiss	P63010

别名	AP2B1 (YD34202)
----	-----------------

产品验证



实验步骤

访问官网浏览详情: www.ablybio.cn