

PSMA4 (YD15735) Rabbit mAb

货号: **AYD12763**

产品信息

反应	Human,Mouse,Rat
宿主	Rabbit
克隆性	Monoclonal
预测反应	
应用	WB IHC-P ICC/IF IP
推荐浓度	
理论分子量	29kDa
实测分子量	
形式	Liquid
保存条件	Store at -20°C. Avoid freeze / thaw cycles. Buffer: PBS with 0.75% BSA,50% glycerol,pH7.3.
偶联物	Unconjugated
阳性对照	293T,U-251MG,HepG2,HeLa,Jurkat,PC-12,Mouse liver,Mouse kidney,COS-7
细胞定位	Cytoplasm, Nucleus
纯化	

抗原信息

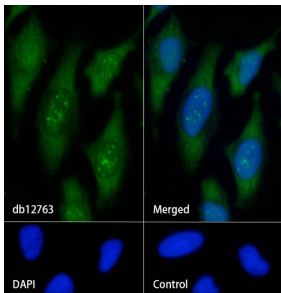
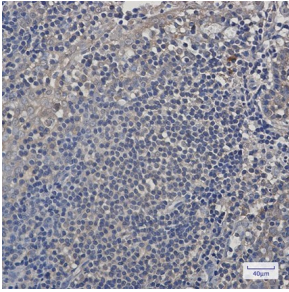
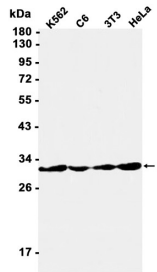
抗原信息	
------	--

靶点信息

研究背景	The proteasome is a multicatalytic proteinase complex with a highly ordered ring-shaped 20S core structure. The core structure is composed of 4 rings of 28 non-identical subunits; 2 rings are composed of 7 alpha subunits and 2 rings are composed of 7 beta subunits. Proteasomes are distributed throughout eukaryotic cells at a high concentration and cleave peptides in an ATP/ubiquitin-dependent process in a non-lysosomal pathway. An essential function of a modified proteasome, the immunoproteasome, is the processing of class I MHC peptides. This gene encodes a member of the peptidase T1A family, that is a 20S core alpha subunit. Three alternatively spliced transcript variants encoding different isoforms have been found for this gene.
基因ID	5685

基因名	PSMA4
Swiss	P25789
别名	PSMA4 (YD15735)

产品验证



实验步骤

访问官网浏览详情: www.ablybio.cn