

Nucleophosmin (YD13788) Rabbit mAb

货号: **AYD12652**

产品信息

反应	Human,Mouse,Rat
宿主	Rabbit
克隆性	Monoclonal
预测反应	
应用	WB IHC-P ICC/IF FC
推荐浓度	
理论分子量	33kDa
实测分子量	
形式	Liquid
保存条件	Store at -20°C. Avoid freeze / thaw cycles. Buffer: PBS with 0.75% BSA,50% glycerol,pH7.3.
偶联物	Unconjugated
阳性对照	HeLa,PC-12
细胞定位	Nucleus, nucleolus, nucleoplasm, Cytoplasm, cytoskeleton, microtubule organizing center, centrosome
纯化	

抗原信息

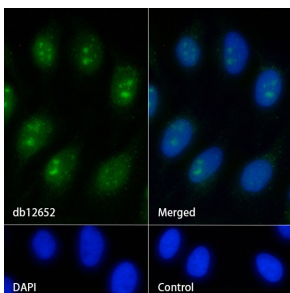
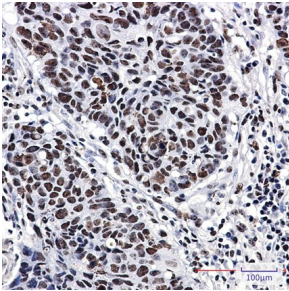
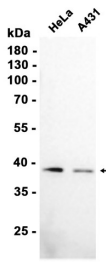
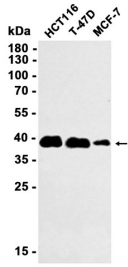
抗原信息	
------	--

靶点信息

研究背景	This gene encodes a phosphoprotein which moves between the nucleus and the cytoplasm. The gene product is thought to be involved in several processes including regulation of the ARF/p53 pathway. A number of genes are fusion partners have been characterized, in particular the anaplastic lymphoma kinase gene on chromosome 2. Mutations in this gene are associated with acute myeloid leukemia. More than a dozen pseudogenes of this gene have been identified. Alternative splicing results in multiple transcript variants.
基因ID	4869
基因名	NPM1

Swiss	P06748
别名	Nucleophosmin (YD13788)

产品验证



实验步骤

访问官网浏览详情: www.ablybio.cn