

Nuf2 (YD16289) Rabbit mAb

货号: **AYD12585**

产品信息

反应	Human
宿主	Rabbit
克隆性	Monoclonal
预测反应	
应用	WB ICC/IF FC
推荐浓度	
理论分子量	54kDa
实测分子量	
形式	Liquid
保存条件	Store at -20°C. Avoid freeze / thaw cycles. Buffer: PBS with 0.75% BSA,50% glycerol,pH7.3.
偶联物	Unconjugated
阳性对照	HeLa,293T,MCF7
细胞定位	Nucleus, Chromosome, centromere, kinetochores
纯化	

抗原信息

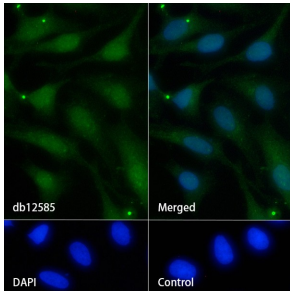
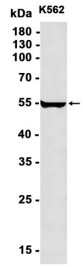
抗原信息	
------	--

靶点信息

研究背景	This gene encodes a protein that is highly similar to yeast Nuf2, a component of a conserved protein complex associated with the centromere. Yeast Nuf2 disappears from the centromere during meiotic prophase I when centromeres lose their connection to the spindle pole body, and plays a regulatory role in chromosome segregation. The encoded protein is found to be associated with centromeres of mitotic HeLa cells, which suggests that this protein is a functional homolog of yeast Nuf2. Alternatively spliced transcript variants that encode the same protein have been described. [provided by RefSeq, Jul 2008]
基因ID	83540
基因名	NUF2

Swiss	Q9BZD4
别名	Nuf2 (YD16289)

产品验证



实验步骤

访问官网浏览详情: www.ablybio.cn