

# MLH1 (YD14470) Rabbit mAb

货号: **AYD12504**

## 产品信息

|       |   |
|-------|---|
| 反应    | Human   |
| 宿主    | Rabbit  |
| 克隆性   | Monoclonal  |
| 预测反应  |   |
| 应用    | WB IHC ICC/IF FC IP   |
| 推荐浓度  |   |
| 理论分子量 | 85kDa   |
| 实测分子量 |   |
| 形式    | Liquid  |
| 保存条件  | Store at -20°C. Avoid freeze / thaw cycles.<br>Buffer: PBS with 0.75% BSA,50% glycerol,pH7.3. |
| 偶联物   | Unconjugated  |
| 阳性对照  | Jurkat,Mouse thymus,HeLa,mouse brain  |
| 细胞定位  | Nucleus, Chromosome   |
| 纯化    |   |

## 抗原信息

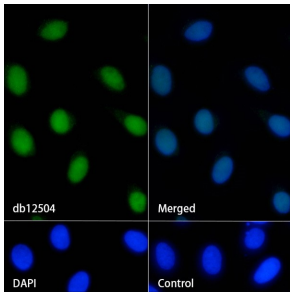
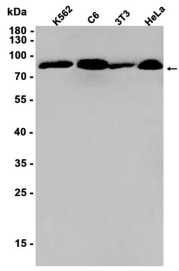
|      |  |
|------|--|
| 抗原信息 |  |
|------|--|

## 靶点信息

|       |   |
|-------|---|
| 研究背景  | This gene was identified as a locus frequently mutated in hereditary nonpolyposis colon cancer (HNPCC). It is a human homolog of the E. coli DNA mismatch repair gene mutL, consistent with the characteristic alterations in microsatellite sequences (RER+phenotype) found in HNPCC. Alternative splicing results in multiple transcript variants encoding distinct isoforms. Additional transcript variants have been described, but their full-length natures have not been determined.[provided by RefSeq, Nov 2009] |
| 基因ID  | 4292  |
| 基因名   | MLH1  |
| Swiss | P40692  |

|    |                |
|----|----------------|
| 别名 | MLH1 (YD14470) |
|----|----------------|

## 产品验证



## 实验步骤

访问官网浏览详情: [www.ablybio.cn](http://www.ablybio.cn)