

AKT1/2 (YD14626) Rabbit mAb

货号: **AYD12479**

产品信息

反应	Human,Mouse,Rat
宿主	Rabbit
克隆性	Monoclonal
预测反应	
应用	WB IHC-P ICC/IF FC IP
推荐浓度	
理论分子量	56kDa
实测分子量	
形式	Liquid
保存条件	Store at -20°C. Avoid freeze / thaw cycles. Buffer: PBS with 0.75% BSA,50% glycerol,pH7.3.
偶联物	Unconjugated
阳性对照	HeLa,NIH/3T3
细胞定位	Cytoplasm, Nucleus, Cell membrane, Early endosome
纯化	

抗原信息

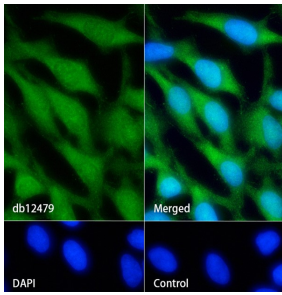
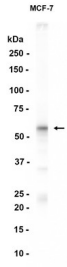
抗原信息	
------	--

靶点信息

研究背景	This gene is a putative oncogene encoding a protein belonging to a subfamily of serine/threonine kinases containing SH2-like (Src homology 2-like) domains. The gene was shown to be amplified and overexpressed in 2 of 8 ovarian carcinoma cell lines and 2 of 15 primary ovarian tumors. Overexpression contributes to the malignant phenotype of a subset of human ductal pancreatic cancers. The encoded protein is a general protein kinase capable of phosphorylating several known proteins.
基因ID	208
基因名	AKT2
Swiss	P31751

别名	AKT1/2 (YD14626)
----	------------------

产品验证



实验步骤

访问官网浏览详情: www.ablybio.cn