

# CRM1 (YD19788) Rabbit mAb

货号: **AYD12446**

## 产品信息

反应	Human,Mouse,Rat
宿主	Rabbit
克隆性	Monoclonal
预测反应	
应用	WB IHC-P ICC/IF FC
推荐浓度	
理论分子量	123kDa
实测分子量	
形式	Liquid
保存条件	Store at -20°C. Avoid freeze / thaw cycles. Buffer: PBS with 0.75% BSA,50% glycerol,pH7.3.
偶联物	Unconjugated
阳性对照	HeLa,MCF7,RAW264.7,U-251MG
细胞定位	Cytoplasm, Nucleus, nucleoplasm, Cajal body, nucleolus
纯化	

## 抗原信息

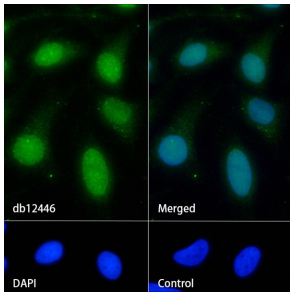
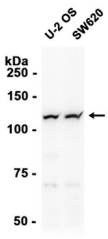
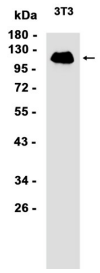
抗原信息	
------	--

## 靶点信息

研究背景	This cell-cycle-regulated gene encodes a protein that mediates leucine-rich nuclear export signal (NES)-dependent protein transport. The protein specifically inhibits the nuclear export of Rev and U snRNAs. It is involved in the control of several cellular processes by controlling the localization of cyclin B, MPAK, and MAPKAP kinase 2. This protein also regulates NFAT and AP-1.
基因ID	7514
基因名	XPO1
Swiss	O14980

别名	CRM1 (YD19788)
----	----------------

### 产品验证



### 实验步骤

访问官网浏览详情: [www.ablybio.cn](http://www.ablybio.cn)