

Cathepsin B (YD18146) Rabbit mAb

货号: **AYD12432**

产品信息

反应	Mouse,Rat
宿主	Rabbit
克隆性	Monoclonal
预测反应	
应用	WB IHC-P ICC/IF FC
推荐浓度	
理论分子量	37kDa
实测分子量	
形式	Liquid
保存条件	Store at -20°C. Avoid freeze / thaw cycles. Buffer: PBS with 0.75% BSA,50% glycerol,pH7.3.
偶联物	Unconjugated
阳性对照	
细胞定位	Lysosome, Melanosome, Secreted, extracellular space, Apical cell membrane
纯化	

抗原信息

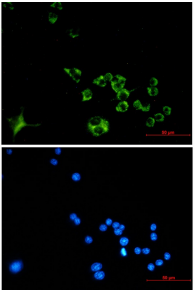
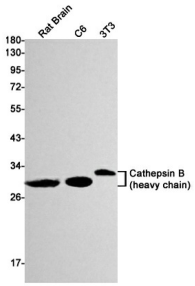
抗原信息	
------	--

靶点信息

研究背景	Thiol protease which is believed to participate in intracellular degradation and turnover of proteins (By similarity). Cleaves matrix extracellular phosphoglycoprotein MEPE (By similarity). Involved in the solubilization of cross-linked TG/thyroglobulin in the thyroid follicle lumen (PubMed:12782676). Has also been implicated in tumor invasion and metastasis (By similarity)
基因ID	3134
基因名	Ctsb
Swiss	P10605

别名	Cathepsin B (YD18146)
----	-----------------------

产品验证



实验步骤

访问官网浏览详情: www.ablybio.cn