

CENPE (YD13152) Rabbit mAb

货号: **AYD12384**

产品信息

反应	Human
宿主	Rabbit
克隆性	Monoclonal
预测反应	
应用	WB
推荐浓度	
理论分子量	316kDa
实测分子量	
形式	Liquid
保存条件	Store at -20°C. Avoid freeze / thaw cycles. Buffer: PBS with 0.75% BSA,50% glycerol,pH7.3.
偶联物	Unconjugated
阳性对照	U-87MG,HeLa,Rat brain
细胞定位	Chromosome, centromere, kinetochore, Cytoplasm, cytoskeleton, spindle
纯化	

抗原信息

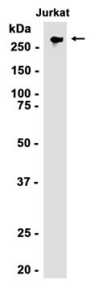
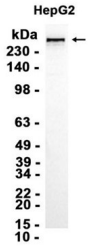
抗原信息	
------	--

靶点信息

研究背景	Centrosome-associated protein E (CENPE) is a kinesin-like motor protein that accumulates in the G2 phase of the cell cycle. Unlike other centrosome-associated proteins, it is not present during interphase and first appears at the centromere region of chromosomes during prometaphase. This protein is required for stable spindle microtubule capture at kinetochores which is a necessary step in chromosome alignment during prometaphase. This protein also couples chromosome position to microtubule depolymerizing activity. Alternative splicing results in multiple transcript variants encoding distinct protein isoforms.
基因ID	1062
基因名	CENPE

Swiss	Q02224
别名	CENPE (YD13152)

产品验证



实验步骤

访问官网浏览详情: www.ablybio.cn