

CLEC4C (YD16267) Rabbit mAb

货号: **AYD12362**

产品信息

反应	Human
宿主	Rabbit
克隆性	Monoclonal
预测反应	
应用	WB IHC-P
推荐浓度	
理论分子量	25kDa
实测分子量	
形式	Liquid
保存条件	Store at -20°C. Avoid freeze / thaw cycles. Buffer: PBS with 0.75% BSA,50% glycerol,pH7.3.
偶联物	Unconjugated
阳性对照	
细胞定位	Cell membrane
纯化	

抗原信息

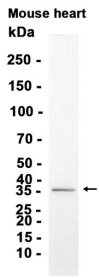
抗原信息	
------	--

靶点信息

研究背景	Lectin-type cell surface receptor which may play a role in antigen capturing by dendritic cells (PubMed:11748283, PubMed:21880719, PubMed:25995448). Specifically recognizes non-sialylated galactose-terminated biantennary glycans containing the trisaccharide epitope Gal(beta1-3/4)GlcNAc(beta1-2)Man (PubMed:21880719, PubMed:25995448). Binds to serum IgG (PubMed:25995448). Efficiently targets ligand into an antigen-processing and peptide-loading compartments for presentation to T-cells (PubMed:11748283). May mediate potent inhibition of induction of IFN-alpha/beta expression in plasmacytoid dendritic cells (PubMed:11748283, PubMed:21880719). May act as a signaling receptor that activates protein-tyrosine kinases and mobilizes intracellular calcium (PubMed:11748283)
基因ID	170482
基因名	CLEC4C

Swiss	Q8WTT0
别名	CLEC4C (YD16267)

产品验证



实验步骤

访问官网浏览详情: www.ablybio.cn