

# CMTM6 (YD34210) Rabbit mAb

货号: **AYD12358**

## 产品信息

反应	Human,Mouse,Rat
宿主	Rabbit
克隆性	Monoclonal
预测反应	
应用	WB IHC-P FC IP
推荐浓度	
理论分子量	20kDa
实测分子量	
形式	Liquid
保存条件	Store at -20°C. Avoid freeze / thaw cycles. Buffer: PBS with 0.75% BSA,50% glycerol,pH7.3.
偶联物	Unconjugated
阳性对照	Rat lung
细胞定位	Cell membrane, Early endosome membrane, Recycling endosome membrane
纯化	

## 抗原信息

抗原信息	
------	--

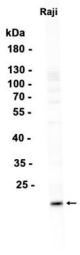
## 靶点信息

研究背景	This gene belongs to the chemokine-like factor gene superfamily, a novel family that is similar to the chemokine and transmembrane 4 superfamilies. This gene is one of several chemokine-like factor genes located in a cluster on chromosome 3. This gene is widely expressed in many tissues, but the exact function of the encoded protein is unknown.
基因ID	54918
基因名	CMTM6
Swiss	Q9NX76

别名	CMTM6 (YD34210)
----	-----------------

## 产品验证

---



## 实验步骤

访问官网浏览详情: [www.ablybio.cn](http://www.ablybio.cn)