

COPE (YD34947) Rabbit mAb

货号: **AYD12355**

产品信息

反应	Human
宿主	Rabbit
克隆性	Monoclonal
预测反应	
应用	WB IHC-P ICC/IF FC
推荐浓度	
理论分子量	34kDa
实测分子量	
形式	Liquid
保存条件	Store at -20°C. Avoid freeze / thaw cycles. Buffer: PBS with 0.75% BSA,50% glycerol,pH7.3.
偶联物	Unconjugated
阳性对照	HeLa,HT-29,U-251MG,Mouse stomach,Rat pancreas
细胞定位	Cytoplasm, Golgi apparatus membrane, Cytoplasmic vesicle, COPI-coated vesicle membrane
纯化	

抗原信息

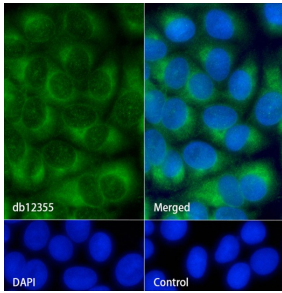
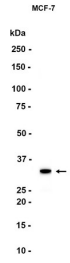
抗原信息	
------	--

靶点信息

研究背景	The product of this gene is an epsilon subunit of coatamer protein complex. Coatamer is a cytosolic protein complex that binds to dilysine motifs and reversibly associates with Golgi non-clathrin-coated vesicles. It is required for budding from Golgi membranes, and is essential for the retrograde Golgi-to-ER transport of dilysine-tagged proteins. Coatamer complex consists of at least the alpha, beta, beta', gamma, delta, epsilon and zeta subunits. Alternatively spliced transcript variants encoding different isoforms have been identified.
基因ID	11316
基因名	COPE

Swiss	O14579
别名	COPE (YD34947)

产品验证



实验步骤

访问官网浏览详情: www.ablybio.cn