

CPT1A (YD15731) Rabbit mAb

货号: **AYD12347**

产品信息

反应	Human
宿主	Rabbit
克隆性	Monoclonal
预测反应	
应用	WB IHC-P ICC/IF FC IP
推荐浓度	
理论分子量	88kDa
实测分子量	
形式	Liquid
保存条件	Store at -20°C. Avoid freeze / thaw cycles. Buffer: PBS with 0.75% BSA,50% glycerol,pH7.3.
偶联物	Unconjugated
阳性对照	Mouse heart
细胞定位	Mitochondrion outer membrane
纯化	

抗原信息

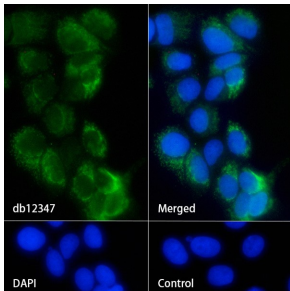
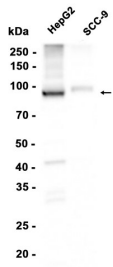
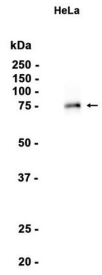
抗原信息	
------	--

靶点信息

研究背景	The mitochondrial oxidation of long-chain fatty acids is initiated by the sequential action of carnitine palm itoyltransferase I (which is located in the outer membrane and is detergent-labile) and carnitine palmitoyl transferase II (which is located in the inner membrane and is detergent-stable), together with a carnitine-acylcarnitine translocase. CPT I is the key enzyme in the carnitine-dependent transport across the mitochondrion inner membrane and its deficiency results in a decreased rate of fatty acid beta-oxidation. Alternatively spliced transcript variants encoding different isoforms have been found for this gene.
基因ID	1374
基因名	CPT1A

Swiss	P50416
别名	CPT1A (YD15731)

产品验证



实验步骤

访问官网浏览详情: www.ablybio.cn