

Phospho-PKD2 (Ser876) (YD20000) Rabbit mAb

货号: **AYD12337**

产品信息

反应	Human,Mouse,Rat
宿主	Rabbit
克隆性	Monoclonal
预测反应	
应用	WB IP
推荐浓度	
理论分子量	97kDa
实测分子量	
形式	Liquid
保存条件	Store at -20°C. Avoid freeze / thaw cycles. Buffer: PBS with 0.75% BSA,50% glycerol,pH7.3.
偶联物	Unconjugated
阳性对照	Raji,U-87MG,HeLa,MCF7,Mouse brain,Rat brain
细胞定位	Cytoplasm, Cell membrane, Nucleus, Golgi apparatus, trans-Golgi network
纯化	

抗原信息

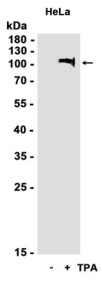
抗原信息	
------	--

靶点信息

研究背景	The protein encoded by this gene belongs to the protein kinase D (PKD) family of serine/threonine protein kinases. This kinase can be activated by phorbol esters as well as by gastrin via the cholecystokinin B receptor (CCKBR) in gastric cancer cells. It can bind to diacylglycerol (DAG) in the trans-Golgi network (TGN) and may regulate basolateral membrane protein exit from TGN. Alternative splicing results in multiple transcript variants encoding different isoforms. [provided by RefSeq, Jul 2008]
基因ID	25865
基因名	PRKD2
Swiss	Q9BZL6

别名	Phospho-PKD2 (Ser876) (YD20000)
----	---------------------------------

产品验证



实验步骤

访问官网浏览详情: www.ablybio.cn