

EphB2 (YD19680) Rabbit mAb

货号: **AYD12324**

产品信息

反应	Human,Mouse,Rat
宿主	Rabbit
克隆性	Monoclonal
预测反应	
应用	WB IHC-P
推荐浓度	
理论分子量	117kDa
实测分子量	
形式	Liquid
保存条件	Store at -20°C. Avoid freeze / thaw cycles. Buffer: PBS with 0.75% BSA,50% glycerol,pH7.3.
偶联物	Unconjugated
阳性对照	NCI-H460,HepG2,HeLa,HT-1080,SW620,Mouse brain,Mouse heart
细胞定位	Cell membrane, Cell projection, axon, dendrite
纯化	

抗原信息

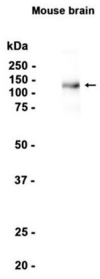
抗原信息	
------	--

靶点信息

研究背景	<p>This gene encodes a member of the Eph receptor family of receptor tyrosine kinase transmembrane glyco proteins. These receptors are composed of an N-terminal glycosylated ligand-binding domain, a transmembrane region and an intracellular kinase domain. They bind ligands called ephrins and are involved in diverse cellular processes including motility, division, and differentiation. A distinguishing characteristic of Eph-ephrin signaling is that both receptors and ligands are competent to transduce a signaling cascade, resulting in bidirectional signaling. This protein belongs to a subgroup of the Eph receptors called EphB. Proteins of this subgroup are distinguished from other members of the family by sequence homology and preferential binding affinity for membrane-bound ephrin-B ligands. Allelic variants are associated with prostate and brain cancer susceptibility. Alternative splicing results in multiple transcript variants.</p>
基因ID	2048

基因名	EPHB2
Swiss	P29323
别名	EphB2 (YD19680)

产品验证



实验步骤

访问官网浏览详情: www.ablybio.cn