

# Lactate Dehydrogenase (YD18367) Rabbit mAb

货号: **AYD12298**

## 产品信息

反应	Human,Mouse,Rat
宿主	Rabbit
克隆性	Monoclonal
预测反应	
应用	WB IHC-P
推荐浓度	
理论分子量	37kDa
实测分子量	
形式	Liquid
保存条件	Store at -20°C. Avoid freeze / thaw cycles. Buffer: PBS with 0.75% BSA,50% glycerol,pH7.3.
偶联物	Unconjugated
阳性对照	HeLa,COS-7,HepG2,A-431,Mouse liver,Rat liver
细胞定位	Cytoplasm
纯化	

## 抗原信息

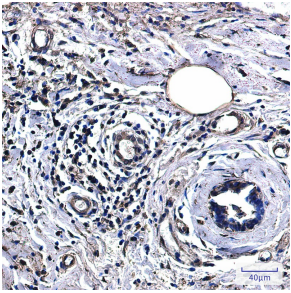
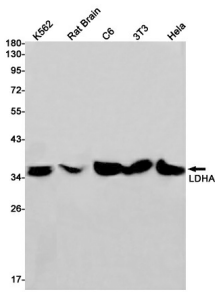
抗原信息	
------	--

## 靶点信息

研究背景	The protein encoded by this gene catalyzes the conversion of L-lactate and NAD to pyruvate and NADH in the final step of anaerobic glycolysis. The protein is found predominantly in muscle tissue and belongs to the lactate dehydrogenase family. Mutations in this gene have been linked to exertional myoglobinuria. Multiple transcript variants encoding different isoforms have been found for this gene. The human genome contains several non-transcribed pseudogenes of this gene.
基因ID	3939
基因名	LDHA
Swiss	P00338

别名	Lactate Dehydrogenase (YD18367)
----	---------------------------------

## 产品验证



## 实验步骤

访问官网浏览详情: [www.ablybio.cn](http://www.ablybio.cn)