

Casein Kinase 1 alpha (YD14448) Rabbit mAb

货号: **AYD12297**

产品信息

反应	Human,Mouse,Rat
宿主	Rabbit
克隆性	Monoclonal
预测反应	
应用	WB
推荐浓度	
理论分子量	39kDa
实测分子量	
形式	Liquid
保存条件	Store at -20°C. Avoid freeze / thaw cycles. Buffer: PBS with 0.75% BSA,50% glycerol,pH7.3.
偶联物	Unconjugated
阳性对照	U-87MG,HeLa,MCF7,PC-3,Mouse brain
细胞定位	Cytoplasm, cytoskeleton, microtubule organizing center, centrosome, Chromosome, centromere, kinetochore, Nucleus speckle, cilium basal body, spindle
纯化	

抗原信息

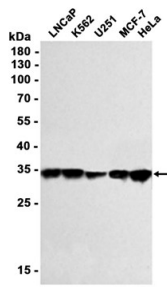
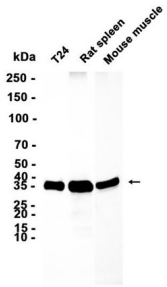
抗原信息	
------	--

靶点信息

研究背景	Casein kinases are operationally defined by their preferential utilization of acidic proteins such as caseins as substrates. It can phosphorylate a large number of proteins. Participates in Wnt signaling. Phosphorylates CTNNB1 at 'Ser-45'. May phosphorylate PER1 and PER2. May play a role in segregating chromosomes during mitosis. May play a role in keratin cytoskeleton disassembly and thereby, it may regulate epithelial cell migration.
基因ID	1452
基因名	CSNK1A1

Swiss	P48729
别名	Casein Kinase 1 alpha (YD14448)

产品验证



实验步骤

访问官网浏览详情: www.ablybio.cn