

# GIT1 (YD35540) Rabbit mAb

货号: **AYD12296**

## 产品信息

反应	Human,Rat
宿主	Rabbit
克隆性	Monoclonal
预测反应	
应用	WB IHC-P
推荐浓度	
理论分子量	84kDa
实测分子量	
形式	Liquid
保存条件	Store at -20°C. Avoid freeze / thaw cycles. Buffer: PBS with 0.75% BSA,50% glycerol,pH7.3.
偶联物	Unconjugated
阳性对照	U-251MG,A-549,A375,Mouse heart,Rat testis
细胞定位	Cytoplasm, Synapse, Presynapse, Postsynapse, Postsynaptic density, Cell junction, focal adhesion, Cell projection, lamellipodium, cytoskeleton, microtubule organizing center, centrosome, spindle pole
纯化	

## 抗原信息

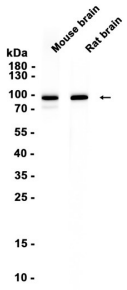
抗原信息	
------	--

## 靶点信息

研究背景	GTPase-activating protein for ADP ribosylation factor family members, including ARF1. Multidomain scaffold protein that interacts with numerous proteins and therefore participates in many cellular functions, including receptor internalization, focal adhesion remodeling, and signaling by both G protein-coupled receptors and tyrosine kinase receptors (By similarity. Through PAK1 activation, positively regulates microtubule nucleation during interphase. Plays a role in the regulation of cytokinesis; for this function, may act in a pathway also involving ENTR1 and PTPN13. May promote cell motility both by regulating focal complex dynamics and by local activation of RAC1.
基因ID	28964

基因名	GIT1
Swiss	Q9Y2X7
别名	GIT1 (YD35540)

## 产品验证



## 实验步骤

访问官网浏览详情: [www.ablybio.cn](http://www.ablybio.cn)