

Lipoamide Dehydrogenase (YD11788) Rabbit mAb

货号: **AYD12224**

产品信息

反应	Human,Mouse,Rat
宿主	Rabbit
克隆性	Monoclonal
预测反应	
应用	WB IHC-P ICC/IF
推荐浓度	
理论分子量	54kDa
实测分子量	
形式	Liquid
保存条件	Store at -20°C. Avoid freeze / thaw cycles. Buffer: PBS with 0.75% BSA,50% glycerol,pH7.3.
偶联物	Unconjugated
阳性对照	MCF7,BT-474,K-562,293T,Mouse liver
细胞定位	Mitochondrion matrix, Nucleus, Cell projection, cilium, flagellum, Cytoplasmic vesicle, secretory vesicle, a crosome
纯化	

抗原信息

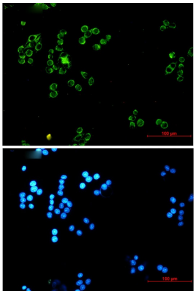
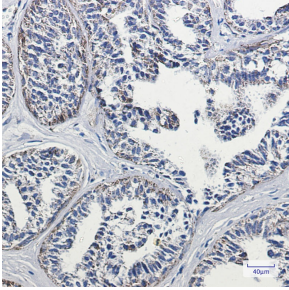
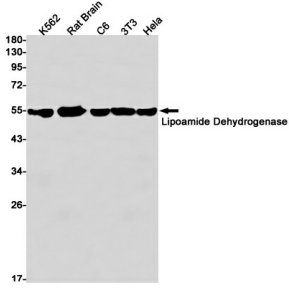
抗原信息	
------	--

靶点信息

研究背景	This gene encodes a member of the class-I pyridine nucleotide-disulfide oxidoreductase family. The encoded protein has been identified as a moonlighting protein based on its ability to perform mechanistically distinct functions. In homodimeric form, the encoded protein functions as a dehydrogenase and is found in several multi-enzyme complexes that regulate energy metabolism. However, as a monomer, this protein can function as a protease. Mutations in this gene have been identified in patients with E3-deficient maple syrup urine disease and lipoamide dehydrogenase deficiency. Alternative splicing results in multiple transcript variants.
基因ID	1738

基因名	DLD
Swiss	P09622
别名	Lipoamide Dehydrogenase (YD11788)

产品验证



实验步骤

访问官网浏览详情: www.ablybio.cn