

Emerin (YD19094) Rabbit mAb

货号: **AYD12218**

产品信息

反应	Human
宿主	Rabbit
克隆性	Monoclonal
预测反应	
应用	WB IHC-P ICC/IF FC
推荐浓度	
理论分子量	29kDa
实测分子量	
形式	Liquid
保存条件	Store at -20°C. Avoid freeze / thaw cycles. Buffer: PBS with 0.75% BSA,50% glycerol,pH7.3.
偶联物	Unconjugated
阳性对照	HeLa,Jurkat,BxPC-3,U-251MG,Y79
细胞定位	Nucleus inner membrane, Nucleus outer membrane
纯化	

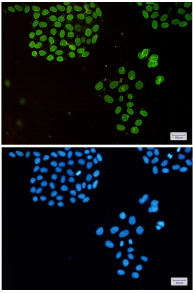
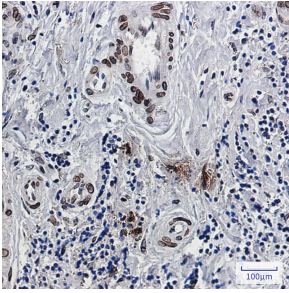
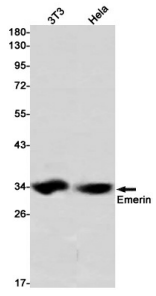
抗原信息

抗原信息	
------	--

靶点信息

研究背景	Emerin is a serine-rich nuclear membrane protein and a member of the nuclear lamina-associated protein family. It mediates membrane anchorage to the cytoskeleton. Dreifuss-Emery muscular dystrophy is an X-linked inherited degenerative myopathy resulting from mutation in the emerin gene.
基因ID	2010
基因名	EMD
Swiss	P50402
别名	Emerin (YD19094)

产品验证



实验步骤

访问官网浏览详情: www.ablybio.cn