

Phospho-Parvin alpha (Ser8) (YD13222) Rabbit mAb

货号: **AYD12210**

产品信息

反应	Human,Mouse,Rat
宿主	Rabbit
克隆性	Monoclonal
预测反应	
应用	WB ICC/IF
推荐浓度	
理论分子量	42kDa
实测分子量	
形式	Liquid
保存条件	Store at -20°C. Avoid freeze / thaw cycles. Buffer: PBS with 0.75% BSA,50% glycerol,pH7.3.
偶联物	Unconjugated
阳性对照	
细胞定位	Cell junction, focal adhesion, Cell membrane, Cytoplasm, cytoskeleton, myofibril, sarcomere, Z line
纯化	

抗原信息

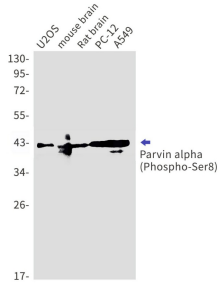
抗原信息	
------	--

靶点信息

研究背景	Plays a role in sarcomere organization and in smooth muscle cell contraction. Required for normal development of the embryonic cardiovascular system, and for normal septation of the heart outflow tract. Plays a role in sprouting angiogenesis and is required for normal adhesion of vascular smooth muscle cells to endothelial cells during blood vessel development (By similarity). Plays a role in the reorganization of the actin cytoskeleton, formation of lamellipodia and ciliogenesis. Plays a role in the establishment of cell polarity, cell adhesion, cell spreading, and directed cell migration. Within the IPP (ILK-PINCH-PARVIN) complex, binds to F-actin, promoting F-actin bundling, a process required to generate force for actin cytoskeleton reorganization and subsequent dynamic cell adhesion events such as cell spreading and migration (PubMed:30367047)
基因ID	55742

基因名	PARVA
Swiss	Q9NVD7
别名	Phospho-Parvin alpha (Ser8) (YD13222)

产品验证



实验步骤

访问官网浏览详情: www.ablybio.cn