

LC3A (YD19036) Rabbit mAb

货号: **AYD12192**

产品信息

反应	Human, Mouse, Rat
宿主	Rabbit
克隆性	Monoclonal
预测反应	
应用	WB IHC ICC/IF FC
推荐浓度	
理论分子量	14kDa
实测分子量	
形式	Liquid
保存条件	Store at -20°C. Avoid freeze / thaw cycles. Buffer: PBS with 0.75% BSA,50% glycerol,pH7.3.
偶联物	Unconjugated
阳性对照	Mouse brain,Rat heart,Rat brain
细胞定位	Cytoplasmic vesicle, autophagosome membrane, Endomembrane system, Cytoplasm, cytoskeleton
纯化	

抗原信息

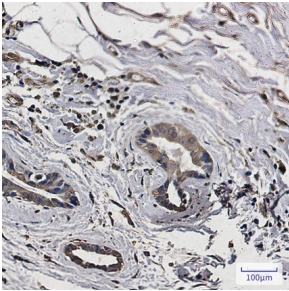
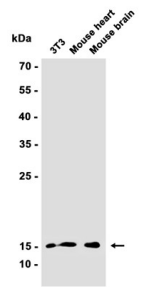
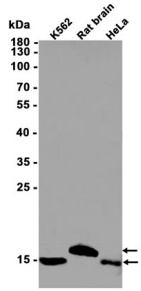
抗原信息	
------	--

靶点信息

研究背景	MAP1A and MAP1B are microtubule-associated proteins which mediate the physical interactions between microtubules and components of the cytoskeleton. MAP1A and MAP1B each consist of a heavy chain subunit and multiple light chain subunits. The protein encoded by this gene is one of the light chain subunits and can associate with either MAP1A or MAP1B. Two transcript variants encoding different isoforms have been found for this gene. The expression of variant 1 is suppressed in many tumor cell lines, suggesting that it may be involved in carcinogenesis.
基因ID	84557
基因名	MAP1LC3A

Swiss	Q9H492
别名	LC3A (YD19036)

产品验证



实验步骤

访问官网浏览详情: www.ablybio.cn