

NEDD8 (YD13987) Rabbit mAb

货号: **AYD12188**

产品信息

反应	Human,Mouse,Rat
宿主	Rabbit
克隆性	Monoclonal
预测反应	
应用	WB IHC-P ICC/IF FC IP
推荐浓度	
理论分子量	9kDa
实测分子量	
形式	Liquid
保存条件	Store at -20°C. Avoid freeze / thaw cycles. Buffer: PBS with 0.75% BSA,50% glycerol,pH7.3.
偶联物	Unconjugated
阳性对照	Mouse brain,Rat brain
细胞定位	Nucleus
纯化	

抗原信息

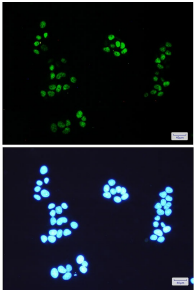
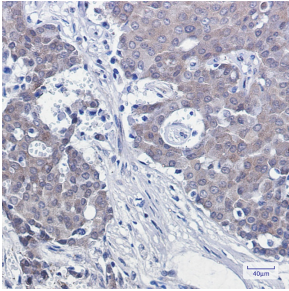
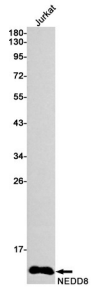
抗原信息	
------	--

靶点信息

研究背景	Neural Precursor Cell Expressed Developmentally Downregulated Gene 8 (NEDD8), also known as Related to Ubiquitin 1 (Rub1), is a 6-8 kDa member of the Ubiquitin family of proteins. Human NEDD8 is activated by a distinct NEDD8-activating (E1) enzyme, a heterodimeric complex composed of APPBP1 and UBA3 subunits. Activated NEDD8 is subsequently transferred to the UBE2M/Ubc12 or UBE2F NEDD8-conjugating (E2) enzymes. Through a process termed neddylation, the ROC1/Rbx1 RING Finger E3 ligase transfers NEDD8 to specific substrates. NEDD8 plays a critical regulatory role in cell proliferation and dysregulation of the NEDD8 pathway has been associated with several cancer pathologies.
基因ID	4738
基因名	NEDD8

Swiss	Q15843
别名	NEDD8 (YD13987)

产品验证



实验步骤

访问官网浏览详情: www.ablybio.cn