

ALDH1A1 (YD11956) Rabbit mAb

货号: **AYD12121**

产品信息

反应	Human,Mouse
宿主	Rabbit
克隆性	Monoclonal
预测反应	
应用	WB IHC-P ICC/IF FC IP
推荐浓度	
理论分子量	55kDa
实测分子量	
形式	Liquid
保存条件	Store at -20°C. Avoid freeze / thaw cycles. Buffer: PBS with 0.75% BSA,50% glycerol,pH7.3.
偶联物	Unconjugated
阳性对照	HepG2,A-549,K-562,Mouse lung,Mouse liver,Mouse testis,Rat lung,Rat kidney
细胞定位	Cytoplasm, cytosol, Cell projection, axon
纯化	

抗原信息

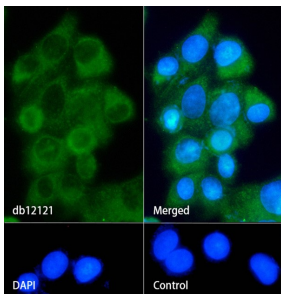
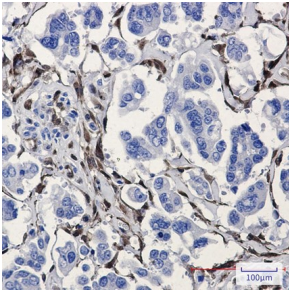
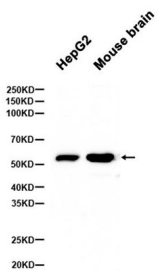
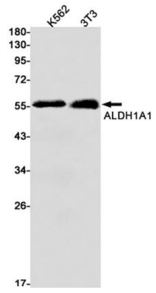
抗原信息	
------	--

靶点信息

研究背景	The protein encoded by this gene belongs to the aldehyde dehydrogenase family. Aldehyde dehydrogenase is the next enzyme after alcohol dehydrogenase in the major pathway of alcohol metabolism. There are two major aldehyde dehydrogenase isozymes in the liver, cytosolic and mitochondrial, which are encoded by distinct genes, and can be distinguished by their electrophoretic mobility, kinetic properties, and subcellular localization. This gene encodes the cytosolic isozyme. Studies in mice show that through its role in retinol metabolism, this gene may also be involved in the regulation of the metabolic responses to high-fat diet.
基因ID	216
基因名	ALDH1A1

Swiss	P00352
别名	ALDH1A1 (YD11956)

产品验证



实验步骤

访问官网浏览详情: www.ablybio.cn