

Insulin Receptor beta (YD16269) Rabbit mAb

货号: **AYD12091**

产品信息

反应	Human
宿主	Rabbit
克隆性	Monoclonal
预测反应	
应用	WB IHC-P IP
推荐浓度	
理论分子量	156kDa
实测分子量	
形式	Liquid
保存条件	Store at -20°C. Avoid freeze / thaw cycles. Buffer: PBS with 0.75% BSA,50% glycerol,pH7.3.
偶联物	Unconjugated
阳性对照	LO2,Mouse brain
细胞定位	Cell membrane, Late endosome, Lysosome
纯化	

抗原信息

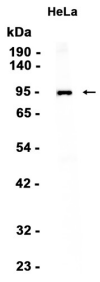
抗原信息	
------	--

靶点信息

研究背景	This gene encodes a member of the receptor tyrosine kinase family of proteins. The encoded prepropeptide is proteolytically processed to generate alpha and beta subunits that form a heterotetrameric receptor. Binding of insulin or other ligands to this receptor activates the insulin signaling pathway, which regulates glucose uptake and release, as well as the synthesis and storage of carbohydrates, lipids and protein. Mutations in this gene underlie the inherited severe insulin resistance syndromes including type A insulin resistance syndrome, Donohue syndrome and Rabson-Mendenhall syndrome. Alternative splicing results in multiple transcript variants.
基因ID	3643
基因名	INSR

Swiss	P06213
别名	Insulin Receptor beta (YD16269)

产品验证



实验步骤

访问官网浏览详情: www.ablybio.cn