

Clathrin Heavy Chain (YD31594) Rabbit mAb

货号: **AYD12043**

产品信息

反应	Human,Mouse,Rat
宿主	Rabbit
克隆性	Monoclonal
预测反应	
应用	WB IHC-P ICC/IF
推荐浓度	
理论分子量	192kDa
实测分子量	
形式	Liquid
保存条件	Store at -20°C. Avoid freeze / thaw cycles. Buffer: PBS with 0.75% BSA,50% glycerol,pH7.3.
偶联物	Unconjugated
阳性对照	HeLa,HepG2,NIH/3T3,Mouse brain,Mouse lung,Rat brain
细胞定位	Cytoplasmic vesicle membrane, Membrane, coated pit, Melanosome, Cytoplasm, cytoskeleton, spindle
纯化	

抗原信息

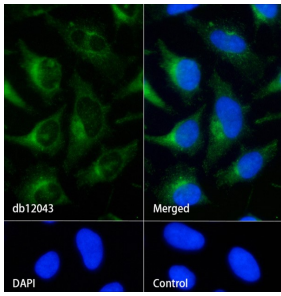
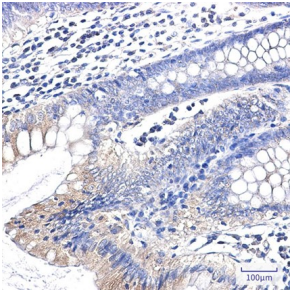
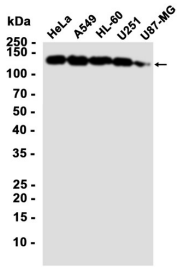
抗原信息	
------	--

靶点信息

研究背景	Clathrin is a major protein component of the cytoplasmic face of intracellular organelles, called coated vesicles and coated pits. These specialized organelles are involved in the intracellular trafficking of receptors and endocytosis of a variety of macromolecules. The basic subunit of the clathrin coat is composed of three heavy chains and three light chains.
基因ID	1213
基因名	CLTC
Swiss	Q00610

别名	Clathrin Heavy Chain (YD31594)
----	--------------------------------

产品验证



实验步骤

访问官网浏览详情: www.ablybio.cn