

Cellubrevin (YD32782) Rabbit mAb

货号: **AYD12041**

产品信息

反应	Human
宿主	Rabbit
克隆性	Monoclonal
预测反应	
应用	WB ICC/IF FC IP
推荐浓度	
理论分子量	11kDa
实测分子量	
形式	Liquid
保存条件	Store at -20°C. Avoid freeze / thaw cycles. Buffer: PBS with 0.75% BSA,50% glycerol,pH7.3.
偶联物	Unconjugated
阳性对照	SKOV3,U-251MG,SW480,A-549,293T,Mouse testis,Mouse kidney,Mouse lung,Rat brain
细胞定位	Early endosome membrane, Recycling endosome membrane, Synapse, synaptosome
纯化	

抗原信息

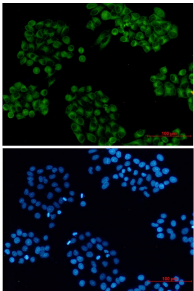
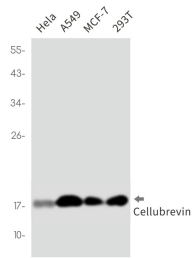
抗原信息	
------	--

靶点信息

研究背景	Synaptobrevins/VAMPs, syntaxins, and the 25-kD synaptosomal-associated protein are the main components of a protein complex involved in the docking and/or fusion of synaptic vesicles with the presynaptic membrane. This gene is a member of the vesicle-associated membrane protein (VAMP)/synaptobrevin family. Because of its high homology to other known VAMPs, its broad tissue distribution, and its subcellular localization, the protein encoded by this gene was shown to be the human equivalent of the rodent cellubrevin. In platelets the protein resides on a compartment that is not mobilized to the plasma membrane on calcium or thrombin stimulation.
基因ID	9341
基因名	VAMP3

Swiss	Q15836
别名	Cellubrevin (YD32782)

产品验证



实验步骤

访问官网浏览详情: www.ablybio.cn