

GCLM (YD32105) Rabbit mAb

货号: **AYD12034**

产品信息

反应	Human,Mouse,Rat
宿主	Rabbit
克隆性	Monoclonal
预测反应	
应用	WB IHC-P IP
推荐浓度	
理论分子量	31kDa
实测分子量	
形式	Liquid
保存条件	Store at -20°C. Avoid freeze / thaw cycles. Buffer: PBS with 0.75% BSA,50% glycerol,pH7.3.
偶联物	Unconjugated
阳性对照	HeLa,Mouse liver,Mouse spleen,Mouse kidney,Rat kidney
细胞定位	
纯化	

抗原信息

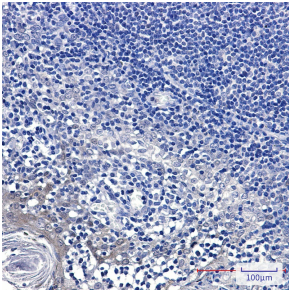
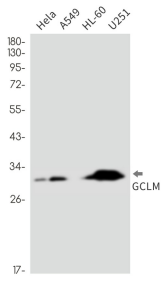
抗原信息	
------	--

靶点信息

研究背景	Glutamate-cysteine ligase, also known as gamma-glutamylcysteine synthetase, is the first rate limiting enzyme of glutathione synthesis. The enzyme consists of two subunits, a heavy catalytic subunit and a light regulatory subunit. Gamma glutamylcysteine synthetase deficiency has been implicated in some forms of hemolytic anemia. Alternative splicing results in multiple transcript variants encoding different isoforms.
基因ID	2730
基因名	GCLM
Swiss	P48507

别名	GCLM (YD32105)
----	----------------

产品验证



实验步骤

访问官网浏览详情: www.ablybio.cn