

Metabotropic Glutamate Receptor 2 (YD18389) Rabbit mAb

货号: **AYD12007**

产品信息

反应	Human,Mouse,Rat
宿主	Rabbit
克隆性	Monoclonal
预测反应	
应用	WB IHC-P ICC/IF FC
推荐浓度	
理论分子量	96kDa
实测分子量	
形式	Liquid
保存条件	Store at -20°C. Avoid freeze / thaw cycles. Buffer: PBS with 0.75% BSA,50% glycerol,pH7.3.
偶联物	Unconjugated
阳性对照	Mouse brain,Rat brain
细胞定位	Cell membrane, Synapse, Cell projection, dendrite
纯化	

抗原信息

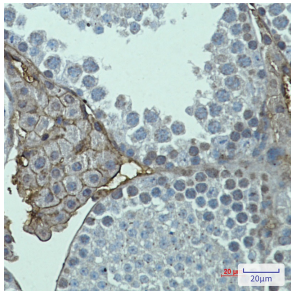
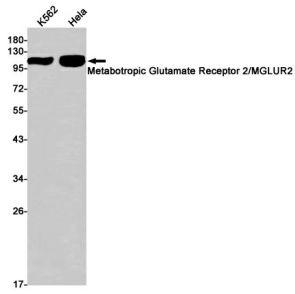
抗原信息	
------	--

靶点信息

研究背景	<p>L-glutamate is the major excitatory neurotransmitter in the central nervous system and activates both ionotropic and metabotropic glutamate receptors. Glutamatergic neurotransmission is involved in most aspects of normal brain function and can be perturbed in many neuropathologic conditions. The metabotropic glutamate receptors are a family of G protein-coupled receptors, that have been divided into 3 groups on the basis of sequence homology, putative signal transduction mechanisms, and pharmacologic properties. Group I includes GRM1 and GRM5 and these receptors have been shown to activate phospholipase C. Group II includes GRM2 and GRM3 while Group III includes GRM4, GRM6, GRM7 and GRM8. Group II and III receptors are linked to the inhibition of the cyclic AMP cascade but differ in their agonist selectivities. Several transcript variants encoding different isoforms have been found for this gene. [provided by RefSeq, Mar 2017]</p>
------	---

基因ID	2912
基因名	GRM2
Swiss	Q14416
别名	Metabotropic Glutamate Receptor 2 (YD18389)

产品验证



实验步骤

访问官网浏览详情: www.ablybio.cn