

SERCA2 ATPase (YD18385) Rabbit mAb

货号: **AYD12002**

产品信息

反应	Human,Mouse,Rat
宿主	Rabbit
克隆性	Monoclonal
预测反应	
应用	WB IHC-P ICC/IF FC
推荐浓度	
理论分子量	115kDa
实测分子量	
形式	Liquid
保存条件	Store at -20°C. Avoid freeze / thaw cycles. Buffer: PBS with 0.75% BSA,50% glycerol,pH7.3.
偶联物	Unconjugated
阳性对照	293T,NIH/3T3,Mouse heart,Rat heart
细胞定位	Endoplasmic reticulum membrane, Sarcoplasmic reticulum membrane
纯化	

抗原信息

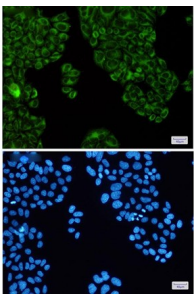
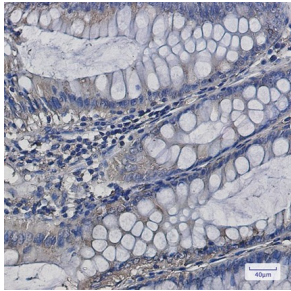
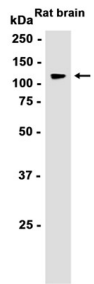
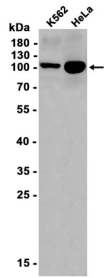
抗原信息	
------	--

靶点信息

研究背景	This gene encodes one of the SERCA Ca(2+)-ATPases, which are intracellular pumps located in the sarcoplasmic or endoplasmic reticula of muscle cells. This enzyme catalyzes the hydrolysis of ATP coupled with the translocation of calcium from the cytosol into the sarcoplasmic reticulum lumen, and is involved in regulation of the contraction/relaxation cycle. Mutations in this gene cause Darier-White disease, also known as keratosis follicularis, an autosomal dominant skin disorder characterized by loss of adhesion between epidermal cells and abnormal keratinization. Alternative splicing results in multiple transcript variants encoding different isoforms.
基因ID	488
基因名	ATP2A2

Swiss	P16615
别名	SERCA2 ATPase (YD18385)

产品验证



实验步骤

访问官网浏览详情: www.ablybio.cn