

Caveolin 1 (YD16787) Rabbit mAb

货号: **AYD11974**

产品信息

反应	Human,Mouse,Rat
宿主	Rabbit
克隆性	Monoclonal
预测反应	
应用	WB IHC-P ICC/IF FC
推荐浓度	
理论分子量	20kDa
实测分子量	
形式	Liquid
保存条件	Store at -20°C. Avoid freeze / thaw cycles. Buffer: PBS with 0.75% BSA,50% glycerol,pH7.3.
偶联物	Unconjugated
阳性对照	HeLa,A-549,Mouse lung,Mouse heart,Rat lung
细胞定位	Golgi apparatus membrane, Cell membrane, Membrane, caveola, Membrane raft, Golgi apparatus, trans-Golgi network, Cytoplasm
纯化	

抗原信息

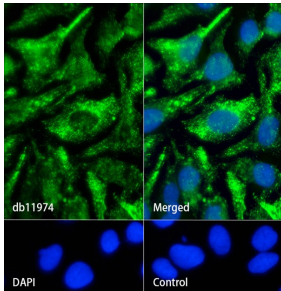
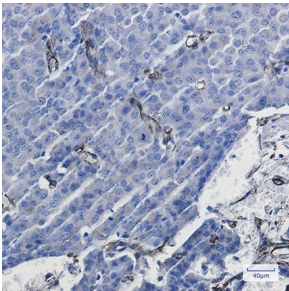
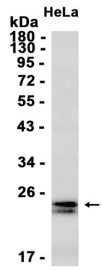
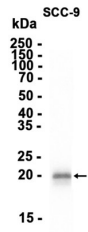
抗原信息	
------	--

靶点信息

研究背景	The scaffolding protein encoded by this gene is the main component of the caveolae plasma membranes found in most cell types. The protein links integrin subunits to the tyrosine kinase FYN, an initiating step in coupling integrins to the Ras-ERK pathway and promoting cell cycle progression. The gene is a tumor suppressor gene candidate and a negative regulator of the Ras-p42/44 mitogen-activated kinase cascade. Caveolin 1 and caveolin 2 are located next to each other on chromosome 7 and express colocalizing proteins that form a stable hetero-oligomeric complex. Mutations in this gene have been associated with Berardinelli-Seip congenital lipodystrophy. Alternatively spliced transcripts encode alpha and beta isoforms of caveolin 1.
基因ID	857

基因名	CAV1
Swiss	Q03135
别名	Caveolin 1 (YD16787)

产品验证



实验步骤

访问官网浏览详情: www.ablybio.cn