

Integrin alpha 5 (YD16775) Rabbit mAb

货号: **AYD11971**

产品信息

反应	Human,Mouse,Rat
宿主	Rabbit
克隆性	Monoclonal
预测反应	
应用	WB IHC-P ICC/IF FC IP
推荐浓度	
理论分子量	115kDa
实测分子量	
形式	Liquid
保存条件	Store at -20°C. Avoid freeze / thaw cycles. Buffer: PBS with 0.75% BSA,50% glycerol,pH7.3.
偶联物	Unconjugated
阳性对照	A-549,NIH/3T3,HT-1080,Rat heart,Mouse heart
细胞定位	Cell membrane, Cell junction, focal adhesion
纯化	

抗原信息

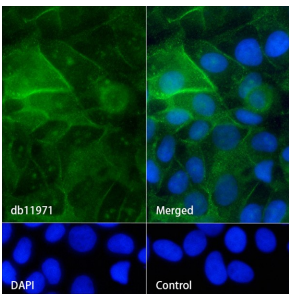
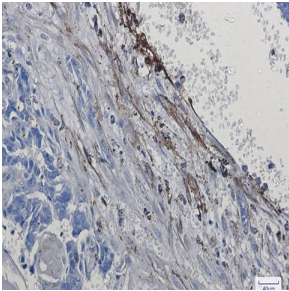
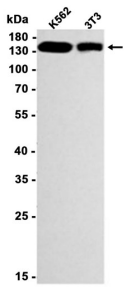
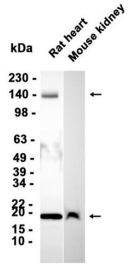
抗原信息	
------	--

靶点信息

研究背景	The product of this gene belongs to the integrin alpha chain family. Integrins are heterodimeric integral membrane proteins composed of an alpha subunit and a beta subunit that function in cell surface adhesion and signaling. The encoded preprotein is proteolytically processed to generate light and heavy chains that comprise the alpha 5 subunit. This subunit associates with the beta 1 subunit to form a fibronectin receptor. This integrin may promote tumor invasion, and higher expression of this gene may be correlated with shorter survival time in lung cancer patients. Note that the integrin alpha 5 and integrin alpha V subunits are encoded by distinct genes.
基因ID	3678
基因名	ITGA5

Swiss	P08648
别名	Integrin alpha 5 (YD16775)

产品验证



实验步骤

访问官网浏览详情: www.ablybio.cn