

Mitofilin (YD16611) Rabbit mAb

货号: **AYD11968**

产品信息

反应	Human
宿主	Rabbit
克隆性	Monoclonal
预测反应	
应用	WB IHC-P ICC/IF FC
推荐浓度	
理论分子量	84kDa
实测分子量	
形式	Liquid
保存条件	Store at -20°C. Avoid freeze / thaw cycles. Buffer: PBS with 0.75% BSA,50% glycerol,pH7.3.
偶联物	Unconjugated
阳性对照	HT-29,293T,A-549,Mouse brain
细胞定位	Mitochondrion inner membrane, Mitochondrion
纯化	

抗原信息

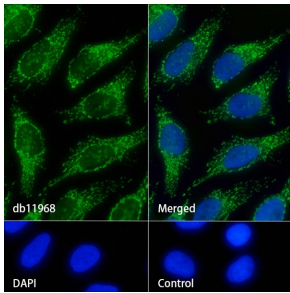
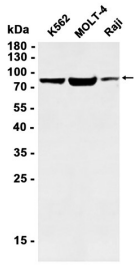
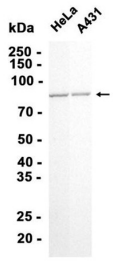
抗原信息	
------	--

靶点信息

研究背景	Component of the MICOS complex, a large protein complex of the mitochondrial inner membrane that plays crucial roles in the maintenance of crista junctions, inner membrane architecture, and formation of contact sites to the outer membrane. Plays an important role in the maintenance of the MICOS complex stability and the mitochondrial cristae morphology.
基因ID	10989
基因名	IMMT
Swiss	Q16891

别名	Mitofilin (YD16611)
----	---------------------

产品验证



实验步骤

访问官网浏览详情: www.ablybio.cn