

IL-1 Receptor Accessory Protein (YD21046) Rabbit mAb

货号: AYD11955

产品信息

反应	Human
宿主	Rabbit
克隆性	Monoclonal
预测反应	
应用	WB FC IP
推荐浓度	
理论分子量	65kDa
实测分子量	
形式	Liquid
保存条件	Store at -20°C. Avoid freeze / thaw cycles. Buffer: PBS with 0.75% BSA,50% glycerol,pH7.3.
偶联物	Unconjugated
阳性对照	SH-SY5Y,Mouse liver,Rat liver
细胞定位	Cell membrane, Secreted
纯化	

抗原信息

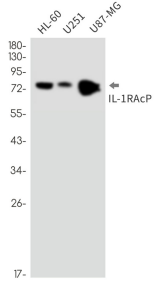
抗原信息	
------	--

靶点信息

研究背景	Interleukin 1 induces synthesis of acute phase and proinflammatory proteins during infection, tissue damage, or stress, by forming a complex at the cell membrane with an interleukin 1 receptor and an accessory protein. This gene encodes the interleukin 1 receptor accessory protein. The protein is a necessary part of the interleukin 1 receptor complex which initiates signalling events that result in the activation of interleukin 1-responsive genes. Alternative splicing of this gene results in two transcript variants encoding two different isoforms, one membrane-bound and one soluble. The ratio of soluble to membrane-bound forms increases during acute-phase induction or stress.
基因ID	3556

基因名	IL1RAP
Swiss	Q9NPH3
别名	IL-1 Receptor Accessory Protein (YD21046)

产品验证



实验步骤

访问官网浏览详情: www.ablybio.cn