

CaMKII beta (YD19083) Rabbit mAb

货号: **AYD11943**

产品信息

反应	Human,Mouse,Rat
宿主	Rabbit
克隆性	Monoclonal
预测反应	
应用	WB IHC-P ICC/IF
推荐浓度	
理论分子量	73kDa
实测分子量	
形式	Liquid
保存条件	Store at -20°C. Avoid freeze / thaw cycles. Buffer: PBS with 0.75% BSA,50% glycerol,pH7.3.
偶联物	Unconjugated
阳性对照	NCI-H460,PC-12,Mouse brain
细胞定位	Cytoplasm, cytoskeleton, microtubule organizing center, centrosome, Sarcoplasmic reticulum membrane, Synapse
纯化	

抗原信息

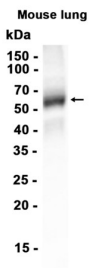
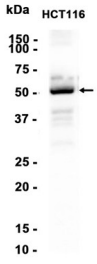
抗原信息	
------	--

靶点信息

研究背景	The product of this gene belongs to the serine/threonine protein kinase family and to the Ca(2+)/calmodulin-dependent protein kinase subfamily. Calcium signaling is crucial for several aspects of plasticity at glutamatergic synapses. In mammalian cells, the enzyme is composed of four different chains: alpha, beta, gamma, and delta. The product of this gene is a beta chain. It is possible that distinct isoforms of this chain have different cellular localizations and interact differently with calmodulin. Alternative splicing results in multiple transcript variants.
基因ID	816
基因名	CAMK2B

Swiss	Q13554
别名	CaMKII beta (YD19083)

产品验证



实验步骤

访问官网浏览详情: www.ablybio.cn