

LGI1 (YD32469) Rabbit mAb

货号: **AYD11941**

产品信息

反应	Human,Mouse,Rat
宿主	Rabbit
克隆性	Monoclonal
预测反应	
应用	WB IHC-P
推荐浓度	
理论分子量	64kDa
实测分子量	
形式	Liquid
保存条件	Store at -20°C. Avoid freeze / thaw cycles. Buffer: PBS with 0.75% BSA,50% glycerol,pH7.3.
偶联物	Unconjugated
阳性对照	U-87MG,HeLa,Mouse brain,Rat brain
细胞定位	Secreted, Synapse, Cytoplasm, Golgi apparatus, Endoplasmic reticulum
纯化	

抗原信息

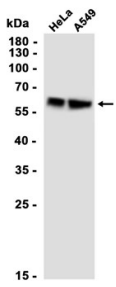
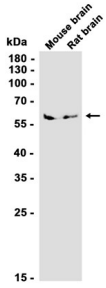
抗原信息	
------	--

靶点信息

研究背景	This gene encodes a member of the secreted leucine-rich repeat (LRR) superfamily and shares homology with members of the SLIT protein family. The encoded protein may regulate the activity of voltage-gated potassium channels and may be involved in neuronal growth regulation and cell survival. This gene is rearranged as a result of translocations in glioblastoma cell lines, and it is frequently down-regulated or rearranged in malignant gliomas. Mutations in this gene result in autosomal dominant lateral temporal epilepsy. Alternative splicing results in multiple transcript variants.
基因ID	9211
基因名	LGI1

Swiss	O95970
别名	LGI1 (YD32469)

产品验证



实验步骤

访问官网浏览详情: www.ablybio.cn