

Tau (YD19880) Rabbit mAb

货号: **AYD11940**

产品信息

| | |
|-------|---|
| 反应 | Human,Mouse |
| 宿主 | Rabbit |
| 克隆性 | Monoclonal |
| 预测反应 | |
| 应用 | WB IHC-P IP |
| 推荐浓度 | |
| 理论分子量 | 79kDa |
| 实测分子量 | |
| 形式 | Liquid |
| 保存条件 | Store at -20°C. Avoid freeze / thaw cycles. Buffer: PBS with 0.75% BSA,50% glycerol,pH7.3. |
| 偶联物 | Unconjugated |
| 阳性对照 | SH-SY5Y,C6 |
| 细胞定位 | Cytoplasm, cytosol, Cell membrane, cytoskeleton, Cell projection, axon, dendrite, Secreted |
| 纯化 | |

抗原信息

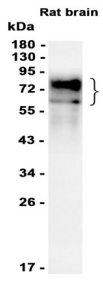
| | |
|------|--|
| 抗原信息 | |
|------|--|

靶点信息

| | |
|-------|---|
| 研究背景 | This gene encodes the microtubule-associated protein tau (MAPT) whose transcript undergoes complex, regulated alternative splicing, giving rise to several mRNA species. MAPT transcripts are differentially expressed in the nervous system, depending on stage of neuronal maturation and neuron type. MAPT gene mutations have been associated with several neurodegenerative disorders such as Alzheimer's disease, Pick's disease, frontotemporal dementia, cortico-basal degeneration and progressive supranuclear palsy. |
| 基因ID | 4137 |
| 基因名 | MAPT |
| Swiss | P10636 |

| | |
|----|---------------|
| 别名 | Tau (YD19880) |
|----|---------------|

产品验证



实验步骤

访问官网浏览详情: www.ablybio.cn