

Cyclophilin B (YD13502) Rabbit mAb

货号: **AYD11930**

产品信息

反应	Human,Mouse,Rat
宿主	Rabbit
克隆性	Monoclonal
预测反应	
应用	WB
推荐浓度	
理论分子量	24kDa
实测分子量	
形式	Liquid
保存条件	Store at -20°C. Avoid freeze / thaw cycles. Buffer: PBS with 0.75% BSA,50% glycerol,pH7.3.
偶联物	Unconjugated
阳性对照	MCF7,22Rv1,HepG2,THP-1,Mouse liver,Mouse kidney,Mouse brain,Mouse lung,Rat liver
细胞定位	Virion, Endoplasmic reticulum lumen, Melanosome
纯化	

抗原信息

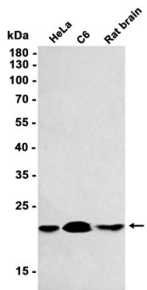
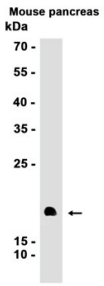
抗原信息	
------	--

靶点信息

研究背景	The protein encoded by this gene is a cyclosporine-binding protein and is mainly located within the endoplasmic reticulum. It is associated with the secretory pathway and released in biological fluids. This protein can bind to cells derived from T- and B-lymphocytes, and may regulate cyclosporine A-mediated immunosuppression. Variants have been identified in this protein that give rise to recessive forms of osteogenesis imperfecta.
基因ID	5479
基因名	PPIB
Swiss	P23284

别名	Cyclophilin B (YD13502)
----	-------------------------

产品验证



实验步骤

访问官网浏览详情: www.ablybio.cn