

# Bcl-2 (YD13485) Rabbit mAb

货号: **AYD11929**

## 产品信息

反应	Human,Mouse,Rat
宿主	Rabbit
克隆性	Monoclonal
预测反应	
应用	WB IHC-P FC
推荐浓度	
理论分子量	26kDa
实测分子量	
形式	Liquid
保存条件	Store at -20°C. Avoid freeze / thaw cycles. Buffer: PBS with 0.75% BSA,50% glycerol,pH7.3.
偶联物	Unconjugated
阳性对照	293T
细胞定位	Mitochondrion outer membrane, Nucleus membrane, Endoplasmic reticulum membrane, Cytoplasm
纯化	

## 抗原信息

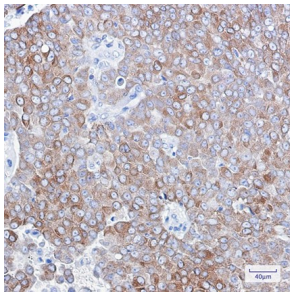
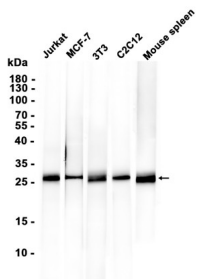
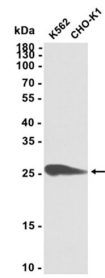
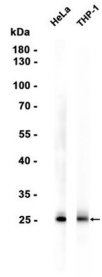
抗原信息	
------	--

## 靶点信息

研究背景	This gene encodes an integral outer mitochondrial membrane protein that blocks the apoptotic death of some cells such as lymphocytes. Constitutive expression of BCL2, such as in the case of translocation of BCL2 to Ig heavy chain locus, is thought to be the cause of follicular lymphoma. Alternative splicing results in multiple transcript variants.
基因ID	596
基因名	BCL2
Swiss	P10415

别名	Bcl-2 (YD13485)
----	-----------------

### 产品验证



### 实验步骤

访问官网浏览详情: [www.ablybio.cn](http://www.ablybio.cn)