

# Stromal Interaction Molecule 1 (YD13390) Rabbit mAb

货号: AYD11924

## 产品信息

反应	Human,Mouse,Rat
宿主	Rabbit
克隆性	Monoclonal
预测反应	
应用	WB IHC-P
推荐浓度	
理论分子量	77kDa
实测分子量	
形式	Liquid
保存条件	Store at -20°C. Avoid freeze / thaw cycles. Buffer: PBS with 0.75% BSA,50% glycerol,pH7.3.
偶联物	Unconjugated
阳性对照	K-562,HeLa,Jurkat,MCF7
细胞定位	Cell membrane, Endoplasmic reticulum membrane, Cytoplasm, cytoskeleton, Sarcoplasmic reticulum
纯化	

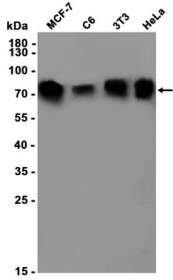
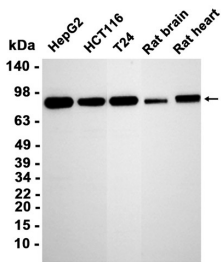
## 抗原信息

抗原信息	
------	--

## 靶点信息

研究背景	This gene encodes a type 1 transmembrane protein that mediates Ca <sup>2+</sup> influx after depletion of intracellular Ca <sup>2+</sup> stores by gating of store-operated Ca <sup>2+</sup> influx channels (SOCs). It is one of several genes located in the imprinted gene domain of 11p15.5, an important tumor-suppressor gene region. Alterations in this region have been associated with the Beckwith-Wiedemann syndrome, Wilms tumor, rhabdomyosarcoma, adrenocortical carcinoma, and lung, ovarian, and breast cancer. This gene may play a role in malignancies and disease that involve this region, as well as early hematopoiesis, by mediating attachment to stromal cells. Mutations in this gene are associated with fatal classic Kaposi sarcoma, immunodeficiency due to defects in store-operated calcium entry (SOCE) in fibroblasts, ectodermal dysplasia and tubular aggregate myopathy. This gene is oriented in a head-to-tail configuration with the ribonucleotide reductase 1 gene (RRM1), with the 3' end of this gene situated 1.6 kb from the 5' end of the RRM1 gene. Alternative splicing of this gene results in multiple transcript variants.
基因ID	6786
基因名	STIM1
Swiss	Q13586
别名	Stromal Interaction Molecule 1 (YD13390)

## 产品验证



## 实验步骤

访问官网浏览详情: [www.ablybio.cn](http://www.ablybio.cn)