

EN1/Engrailed 1 (YD12146) Rabbit mAb

货号: **AYD11891**

产品信息

反应	Human,Mouse,Rat
宿主	Rabbit
克隆性	Monoclonal
预测反应	
应用	WB
推荐浓度	
理论分子量	40kDa
实测分子量	
形式	Liquid
保存条件	Store at -20°C. Avoid freeze / thaw cycles. Buffer: PBS with 0.75% BSA,50% glycerol,pH7.3.
偶联物	Unconjugated
阳性对照	SH-SY5Y,Mouse brain,Rat brain
细胞定位	Nucleus
纯化	

抗原信息

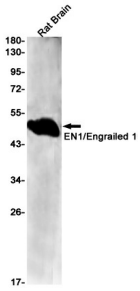
抗原信息	
------	--

靶点信息

研究背景	Homeobox-containing genes are thought to have a role in controlling development. In Drosophila, the 'engrailed' (en) gene plays an important role during development in segmentation, where it is required for the formation of posterior compartments. Different mutations in the mouse homologs, En1 and En2, produced different developmental defects that frequently are lethal. The human engrailed homologs 1 and 2 encode homeodomain-containing proteins and have been implicated in the control of pattern formation during development of the central nervous system. [provided by RefSeq, Jul 2008]
基因ID	2019
基因名	EN1

Swiss	Q05925
别名	EN1/Engrailed 1 (YD12146)

产品验证



实验步骤

访问官网浏览详情: www.ablybio.cn